




**3126 - MITSUBISHI L 200 TRITON [15+]**

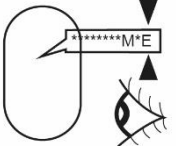
## **RB022 - SEPERATOR**

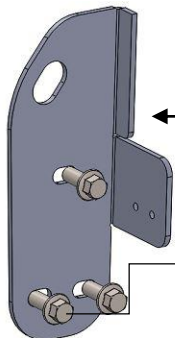
Installation Instructions : RAL-S / RAL-B RUNNING BOARD



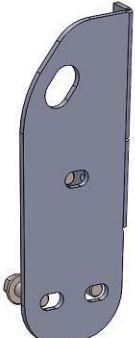
**50 Min.**


ser.nr: 






M10 DIN 6921



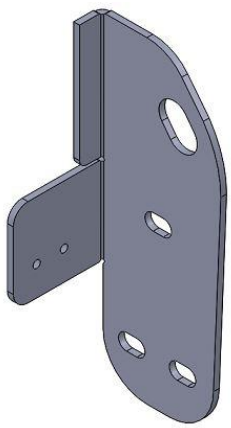
M6 = 10 Nm 

M10 = 50 Nm 

### HARDWARE

6		DIN 933 M8x30 BOLT	6		SPECIAL NUT	6		DIN 125 WASHER M8
---	---	-----------------------	---	---	-------------	---	---	----------------------

### BRACKETS



(x2)

