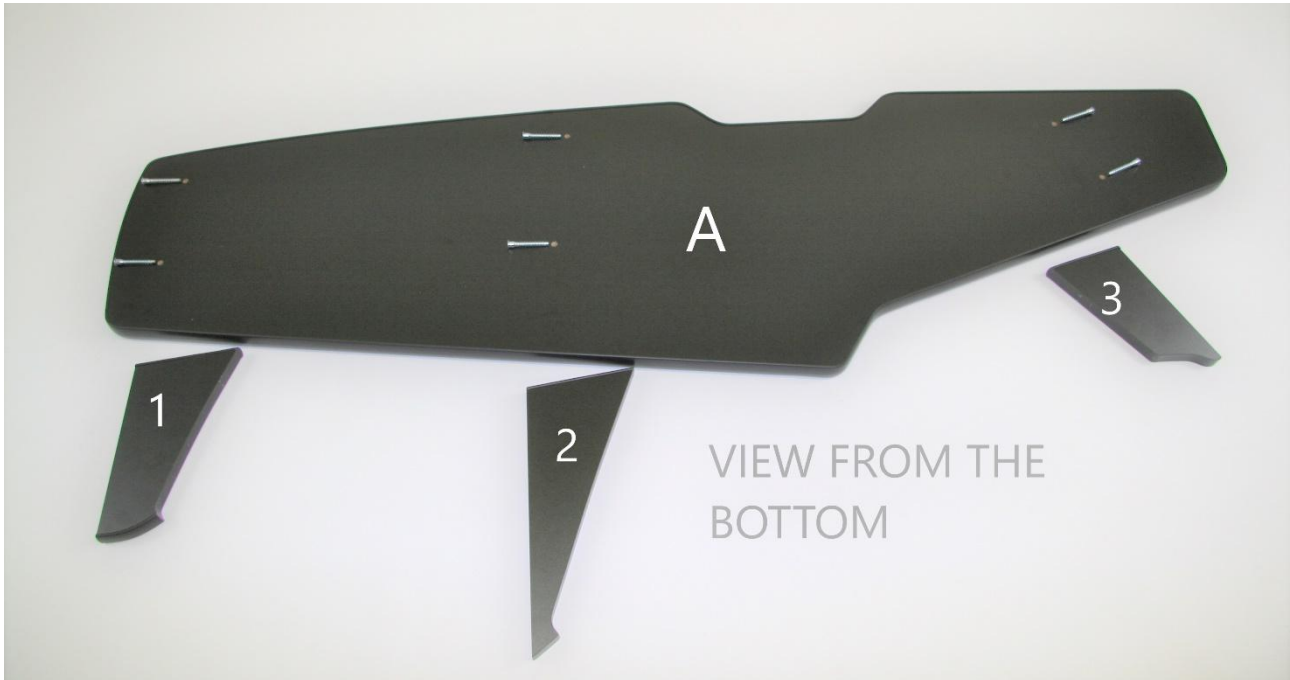
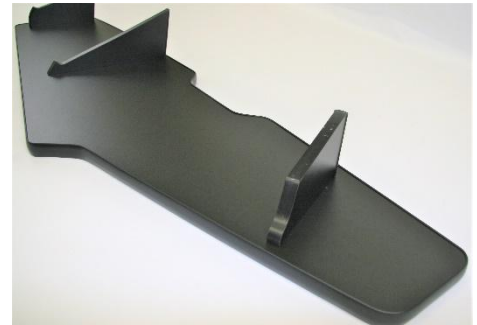


MAN TGX 2020



MAN TGX truck table assembly:

1. Screw table legs (Nr 1, Nr 2, Nr 3) to the detail A



MAN TGX 2020 truck table installation:

- 1) Wash the panel with the spirit liquid;
- 2) Put the table on the panel;
- 3) Mark with pencil shelf sides on the panel;
- 4) Remove the shelf and stick up the sticky strip on the panel;
- 5) Put the table on the panel;

